

TRV Buschhaus

Description:

- One of Germany's largest WTE-plants
- Operational from 1998, expanded in 2005
- 3 lines, each at 175.000 t/a
feed forward grate
22,5 t/h at 9,2 GJ/t
400°C / 40bar
about 40 MWel

Targets
overachieved

Optimisation targets:

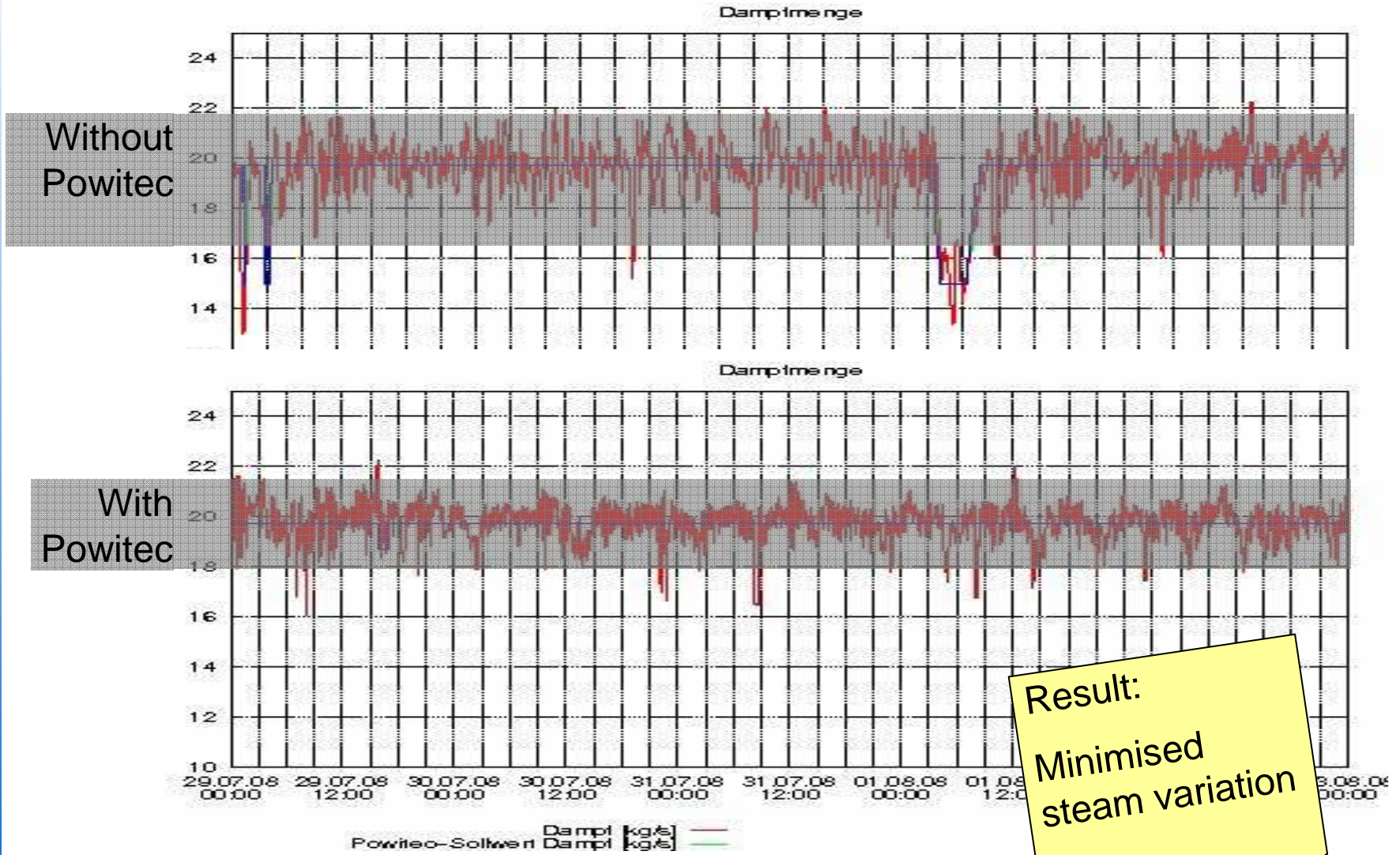
- 2005: Increase throughput by > 3 %
- 2006: Result: +7,6%. Consequently
order for installation of another 2 lines
was placed
- 2008: Change towards higher efficiency
and reduction of emission



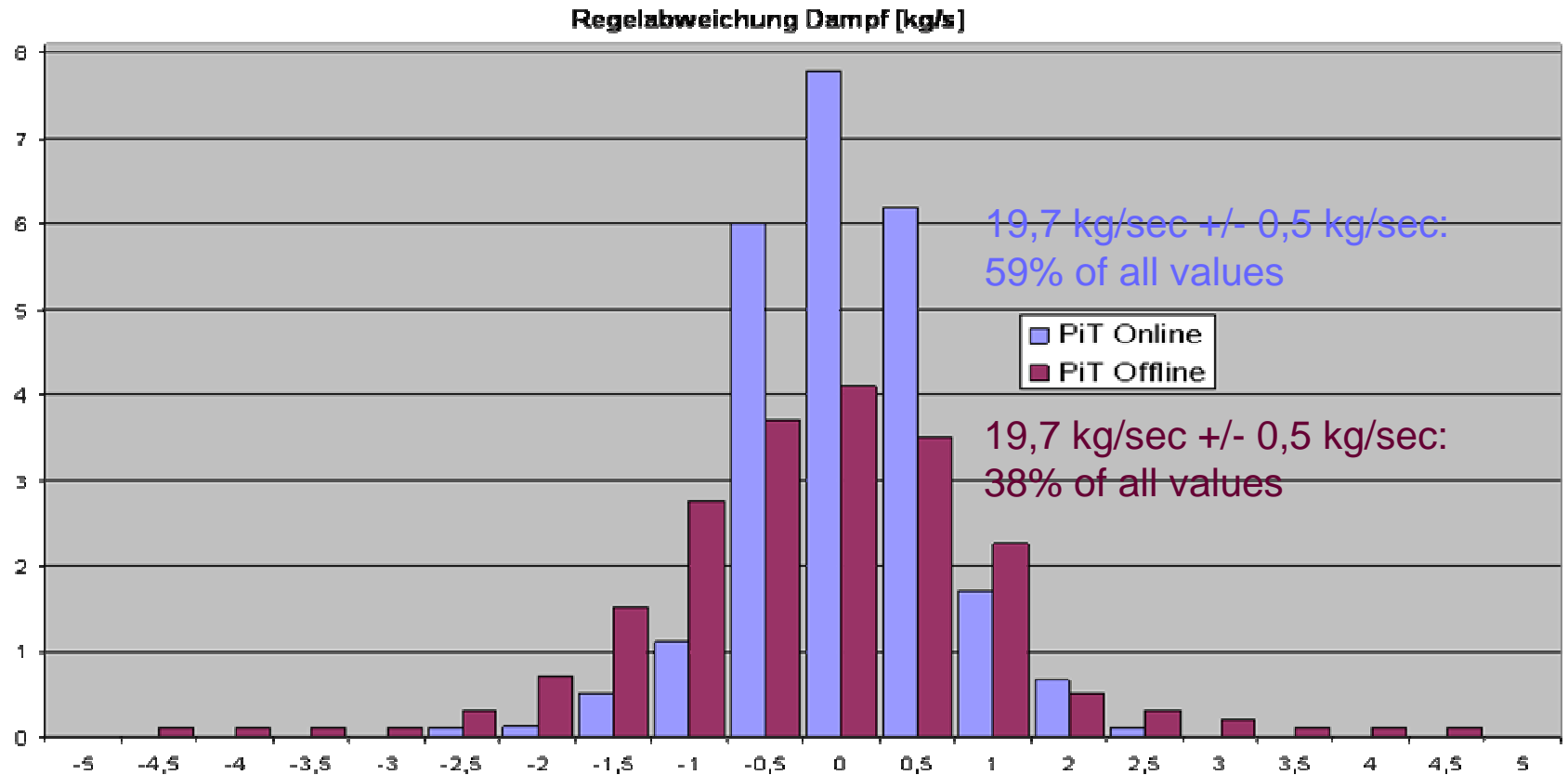
Reasons to use PiT Navigator:

- **Self learning adaptivity**
- Fast Return on Investment
- Achievement of targets
guaranteed

Steam variations

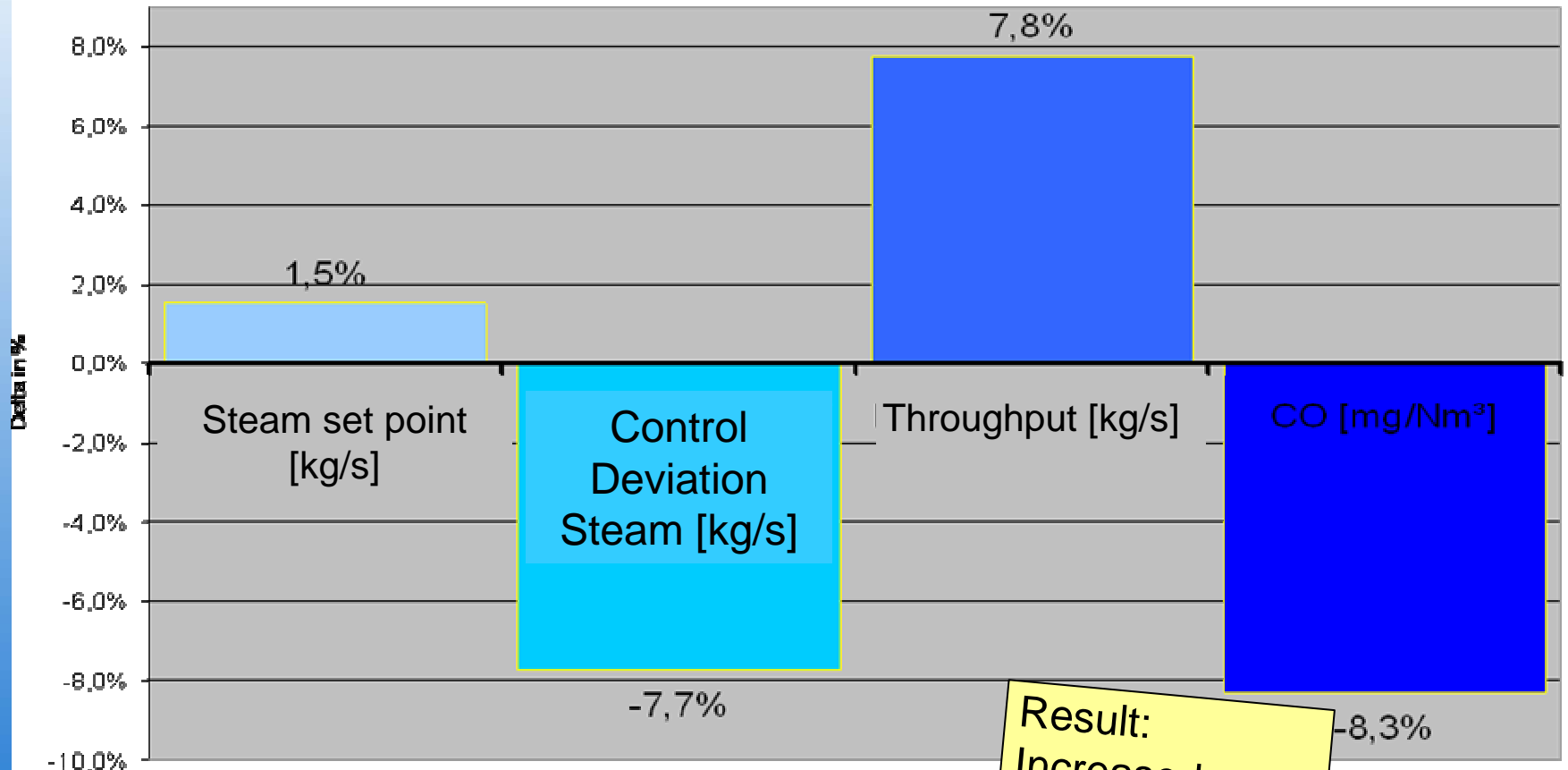


Control deviation steam



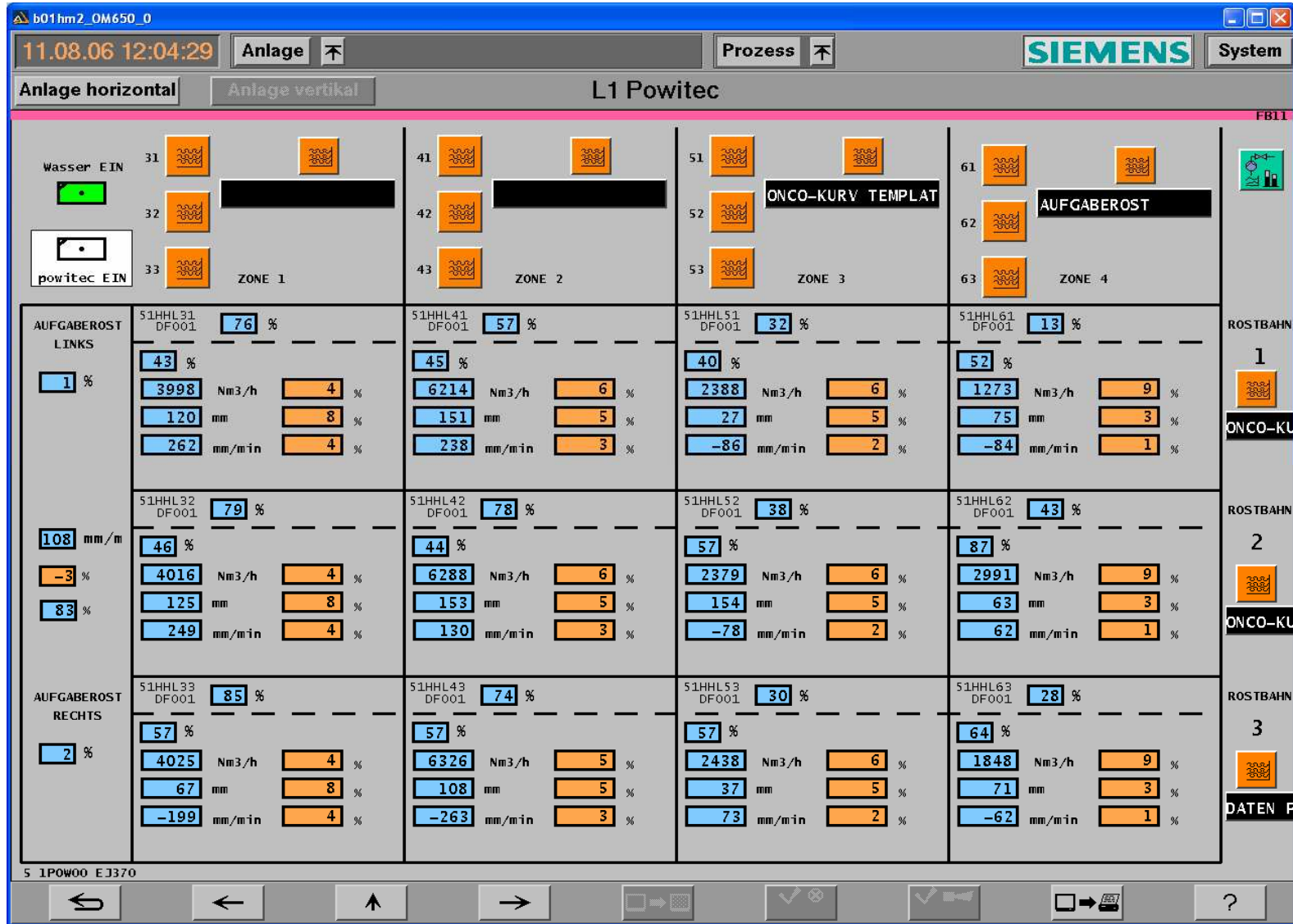
Result:
Reduction in
control
deviation
steam

Results PiT Navigator



Result:
Increased
steam at
reduced CO

PiT Set-point matrix at TRV Buschhaus



Conclusion from TRV Buschhaus:

- Acceptance
 - Through positive experiences
- Reduced workload
 - Reduction in routine work
- Optimisation target flexibility:
 - First: Increase in throughput
 - Then: Higher efficiency and lower emissions
 - Easy to change